

HEALTH WEALTH CAREER

# MERCER HIGHLY RATED FUNDS LIST

AVIVA – MY MONEY

DECEMBER 2017



# CONTENTS

This document provides you with a list of funds within the self select offering provided by Aviva, which Mercer “rates highly”. Mercer are the consultancy firm that helped your employer set up your pension arrangements.

1

MERCER MANAGER RESEARCH RATINGS

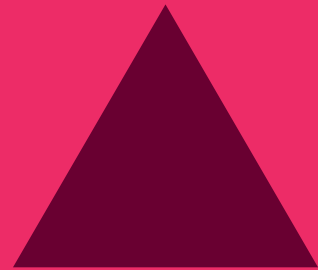
2

HIGHLY RATED FUNDS

3

MERCER TEAM

# MERCER MANAGER RESEARCH RATINGS



# MERCER MANAGER RESEARCH RATINGS

## WHAT DO THEY SIGNIFY THEY?

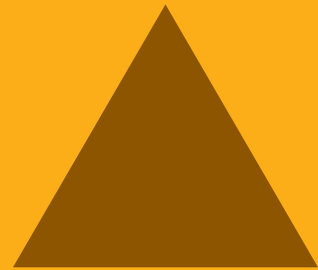
Mercer's rating signifies Mercer's opinion of a strategy's prospects for outperforming a suitable benchmark over a time frame appropriate for the particular strategy.

Examples of some of the factors we take into account in deriving ratings:

- Mercer's confidence in the manager's ability to generate value-adding ideas.
- Mercer's view on any specified outperformance target.
- The opportunities available in the relevant market(s) to achieve outperformance.
- An assessment of the risks taken to try to achieve outperformance.
- An assessment of the strategy relative to peer strategies.
- An assessment of the manager's business management and its impact on particular strategies.



# HIGHLY RATED FUNDS



# HIGHLY RATED FUNDS

## WHAT ARE THEY?

**Highly rated funds** are strategies assessed by Mercer as having “above average” prospects of outperformance, as a result of Mercer’s ongoing monitoring of the universe of researched strategies based on four factors:



### IDEA GENERATION

How strong is the manager’s ability to generate value-adding investment ideas?



### PORTFOLIO CONSTRUCTION

How effectively are these investment ideas translated into weightings within portfolios?



### IMPLEMENTATION

How much of the value-added is given back in the form of transaction costs and opportunity costs?



### BUSINESS MANAGEMENT

Well managed investment firms are more likely to maintain and enhance the competitiveness of their investment strategies over time.

# HIGHLY RATED FUNDS

## HOW CAN THEY HELP IN YOUR CHOICES?

The Highly Rated Funds List aims to help you choose from the wider range of funds available on platform:



### FOCUSED LIST

Supports choice from a wider range of ranges, presenting fund options that constitute Mercer's best investment ideas



### SPLIT BY ASSET CLASS

Coverage of the most widely used asset classes (equities, bonds, property, multi-asset)



### ACTIVE AND PASSIVE OPTIONS

#### ACTIVE FUNDS

The fund manager aims to outperform a given benchmark or target

#### PASSIVE FUNDS

Funds that aim to track a stated benchmark or index

## HIGHLY RATED FUNDS HOW SHOULD THEY BE USED?

- The list should act as guidance, you are not restricted to investing in just the highly rated funds. You should regularly review your investment choice(s). If you are in any doubt regarding the suitability of funds for your needs and circumstances you should seek professional financial advice.
- If you only have access to a restricted set of funds through your scheme, not all of the Highly Rated Funds will be available for investment. **Please consult your scheme literature for more information on the fund options available.**
- Choosing funds is an important decision and you should refer to the fund information provided by Aviva, particularly the **fund description**, the **risk rating** and **charges**.
- Mercer makes no comment regarding the appropriateness of Aviva's rating, which can be found on the Aviva fund specific factsheets.



# HIGHLY RATED FUNDS

## EQUITIES

Asset Class	Manager	Fund Name	Active / Passive
<i>These funds invest predominantly in stocks and shares from companies from around the world.</i>			
<b>Global Equity</b>	Mercer	Active Low Volatility Equity	Active
	Mercer	Active Global Equity	Active
	Mercer	Passive Overseas Equity	Passive
	Mercer	Passive Overseas Equity (GBP Hedged)	Passive
	MFS	Global Equity	Active
<i>These funds invest predominantly in stocks and shares from smaller companies from around the world.</i>			
<b>Global Small Cap Equity</b>	Mercer	Active Global Small Cap Equity	Active
<i>These funds invest predominantly in stocks and shares of companies that the fund manager has applied an ethical screen to or which meet Islamic investment principles as interpreted and laid down by the Shariah Committee.</i>			
<b>Global Sustainable / Global Ethical / Shariah Equity</b>	Mercer	Sustainable Global Equity	Active
	Mercer	Passive Shariah Fund	Passive
	LGIM	Ethical Global Equity Index	Passive
<i>These funds invest predominantly in stocks and shares of emerging markets.</i>			
<b>Emerging Markets Equity</b>	Mercer	Active Emerging Market Equity	Active
	Mercer	Passive Emerging Markets Equity	Passive

# HIGHLY RATED FUNDS

## BONDS

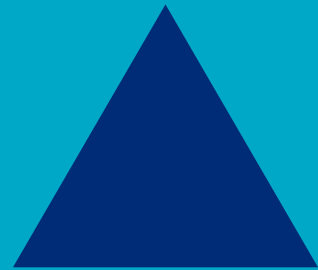
Asset Class	Manager	Fund Name	Active / Passive
<i>These funds predominately invest in sterling denominated fixed interest securities such as government or corporate bonds.</i>			
<b>UK Gilts</b>	Mercer	Passive Over 15 Year Gilt	Passive
<b>UK Index-Linked Gilts</b>	Mercer	Passive Over 5 Year Index Linked Gilts	Passive
<b>UK Corporate Bonds</b>	M&G	Corporate Bonds	Active
	Mercer	Passive UK Corporate Bond	Passive
<b>Pre-Retirement Bonds</b>	Mercer	Pre-Retirement	Passive
	Mercer	Pre-Retirement Inflation Linked	Passive
<b>Absolute Return Bonds</b>	Mercer	Absolute Return Fixed Income	Active
<i>These funds predominately invest in fixed interest securities such as government or corporate bonds issued by emerging market borrowers.</i>			
<b>Emerging Markets Debt</b>	Mercer	Active Emerging Market Debt	Active

# HIGHLY RATED FUNDS

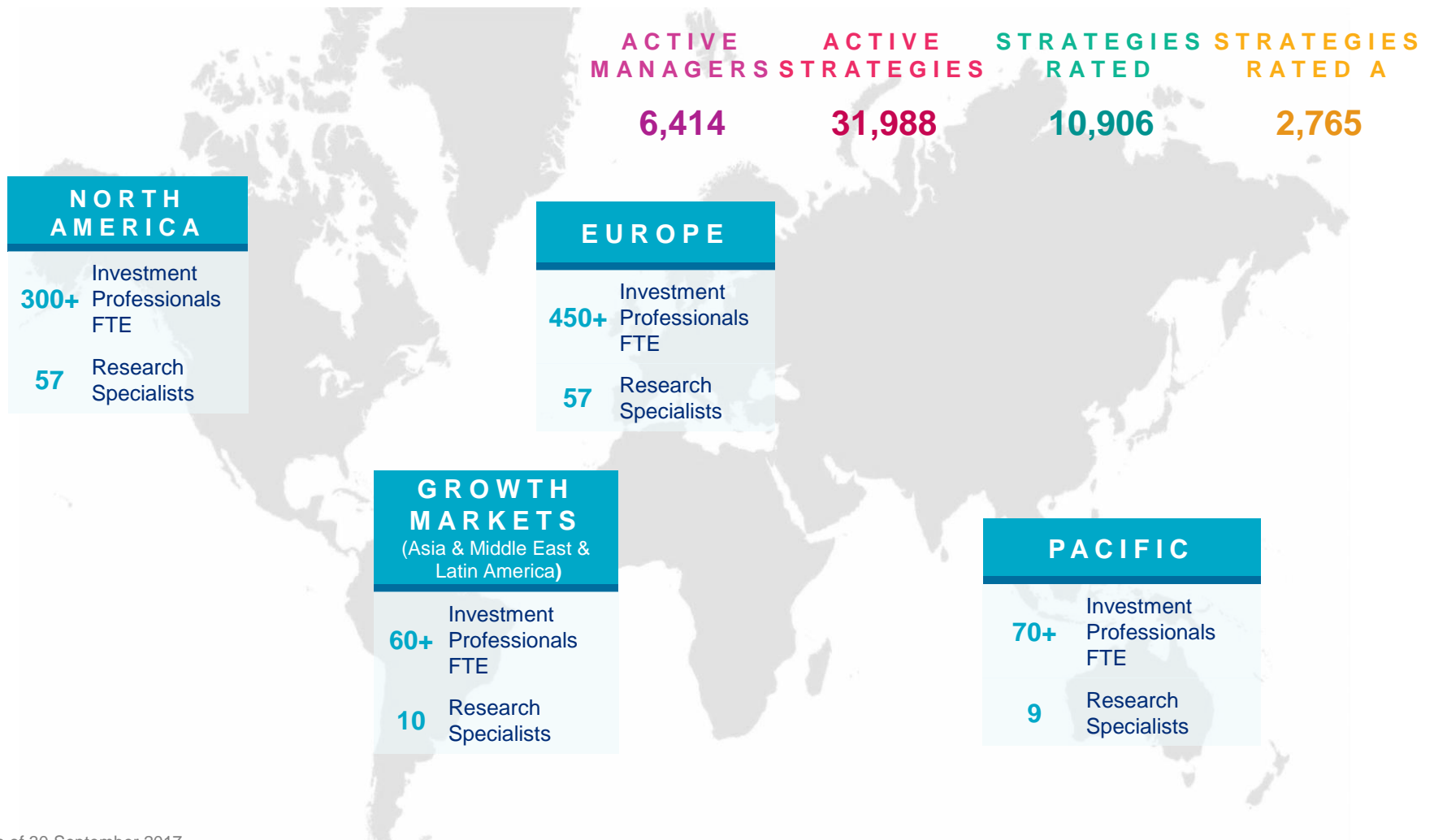
## PROPERTY, MULTI-ASSET AND CASH

Asset Class	Manager	Fund Name	Active / Passive
These funds invest directly in UK commercial real estate including retail, office, industrial and alternative sectors of the market.			
Property	M&G	Property Fund	Active
	Threadneedle	Pensions Property	Active
These funds invest in a wide range of asset classes (e.g. equities, bonds, property, commodities and derivatives) to provide long term equity like performance, with lower volatility.			
Diversified Growth	Aviva	Multi-Strategy Target Return	Active
	BlackRock	DC Diversified Growth Fund	Active
	Insight	Broad Opportunities Fund	Active
	Mercer	Diversified Growth Fund	Active
	Schroder	Diversified Growth Fund	Active
	Standard Life	Global Absolute Return Strategies	Active
These funds predominately invests in money market securities to deliver a return comparable with cash.			
Cash	JP Morgan	Life UK Liquidity Fund	Active
	Mercer	Cash Fund	Active

# MERCER TEAM



# MERCER TEAM GLOBAL NETWORK



Data as of 30 September 2017  
 Investment Professionals exclude Financial Services and are FTE (not count of employees)  
 Research Specialists exclude 12 central support/admin staff

# MERCER TEAM GLOBAL MANAGER RESEARCH

145

Research staff



11

Countries with Mercer  
research representatives



20

Cities with Mercer  
research representatives



52

Research specialists with fund  
management experience



18\*

Average years of  
financial experience



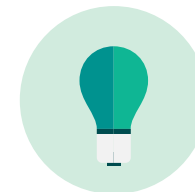
9\*

Average  
years with Mercer



100

Research specialists with MBA, CFA,  
actuarial, masters, or industry  
designation



Research Specialists exclude 12 central support /admin staff  
\*Average years experience excludes analysts and support/admin staff  
Data as at 30 September 2017

# IMPORTANT INFORMATION

- This document contains confidential and proprietary information of Mercer and is intended for the exclusive use of the parties to whom it was provided by Mercer. Its content may not be modified, sold or otherwise provided, in whole or in part, to any other person or entity, without Mercer's written permission.
- The presentation has been prepared solely for information purposes and is not an offer to buy or sell or a solicitation of an offer to buy or sell any investment.
- Neither the oral content of this presentation nor the slides used are intended to convey any indication as to the future investment performance of the product.
- The value of investments may fall as well as rise and the amount returned may be less than the amount invested. Income from investments may also fluctuate in value.
- Where charges are deducted from capital, the capital may be eroded or future growth constrained.
- Changes in investment strategy are likely to incur transaction costs.
- The value of investments in a foreign currency will vary as a result of changes in currency exchange rates.
- Mercer Global Investments Europe (Mercer GI) is an entity established in Ireland and is affiliated to Mercer Limited.
- Mercer GI has established a range of funds using three Irish companies, Mercer QIF Funds plc, MGI Funds plc and Mercer PIF plc. The funds have been approved and Mercer GI are authorised by the Irish Financial Services Regulator.
- Most of the protections provided by the UK regulatory system do not apply to investors in unregulated collective investment schemes and they are excluded from the United Kingdom Financial Services Compensation Scheme.
- Mercer Limited is authorised and regulated by the FCA Registered in England 984275. Registered Office: 1 Tower Place West, London EC3R 5BU. [www.mercer.com](http://www.mercer.com)
- All rights reserved

# RISK WARNINGS

- Past performance cannot be relied upon as a guide to future performance.
- The value of stocks and shares, including unit trusts, can go down as well as up and you may not get back the amount you have invested.
- The value of gilts, bonds, and other fixed income investments including unit trusts can go down as well as up and you may not get back the amount you have invested.
- Investments denominated in a foreign currency will fluctuate with the value of the currency.
- The gearing in derivative strategies means that a small deposit may lead to large losses or gains and more significantly that a relatively small movement can lead to proportionately much larger movements in the value of your investment.
- Certain investments, such as illiquid, leveraged or high-yield instruments or funds and securities issued by small capitalisation and emerging market issuers, carry additional risk that should be considered before choosing any investment manager or making an investment decision.



**MAKE**  **MERCER**  
**TOMORROW,**  
**TODAY**

Mercer Limited is authorised and regulated by the Financial Conduct Authority Registered in England No. 984275.  
Registered Office: 1 Tower Place West, Tower Place, London EC3R 5BU.